

Leadership

Build your Pathway to Success



Australian Association of Government School Administrators

National Conference

12-13 July 2018 - Country Club Launceston

2017/2018 AAGSA Committee

Sue Aveyard	President	ACTBMA
Cheryl Brownley	Vice President	WAMCSE
Sharon Sutczak	Secretary	TSAA
Deb Lade	Treasurer	TSAA
Jennifer Sullivan		SASSPA
Rozanne Patane		SASSPA
Denise Sadler		ABMVSS
Nancy Sandilands		ABMVSS
Hayden Weeks		ACTMBA
Karen Davy		WAMCSE (non-voting)
Lyn Clark		WAECSSA
Mandy Griffin		WAECSSA (non-voting)
Sue Ruciack		SASSAOA
Lesley Knowles		SASSAOA
Penny Beissbarth		ASANT



Australian Association of Government School Administrators

Draft Conference Program Thursday 12 July 2018

8.15am – 8.30am	Registration
8.30am – 8.40am	Welcome by AAGSA president – Sue Aveyard
8.40am – 9.00am	Official Welcome Minister for Education Tasmania
9.00am – 10.30am	Maintaining Motivation Meg Salter
10.30am – 10.45am	Presentation by sponsors
10.45am – 11.15am	Morning Tea
11.15am – 12.30 pm	Managing People Meg Salter
12.30pm – 1.30pm	Lunch
1.30pm – 1.45pm	Presentation by sponsors
1.45pm - 3.30pm	School Business Leadership Mark Donohue
3.30pm – 3.45pm	Conference day 1 close - Lyn Clark
6.30pm - onwards	AAGSA Gala Dinner



Australian Association of Government School Administrators

Draft Conference Program Friday 13 July 2018

8.15am – 8:30am	Registration
9.00am – 9.10am	Welcome by AAGSA Vice President – Cheryl Brownley
9.10am – 10.30am	High Performance Michael Bernard
10.30am – 10.45am	Presentation by Gold sponsors
10.45am – 11.15am	Morning Tea
11.15am – 12.15pm	Health & Wellbeing Michael Bernard
12.15pm – 1.15pm	Lunch
1.15pm – 2.15pm	Winning Cultures / Floral Bras & Football Boots Michelle Cowan
2.15pm – 2.45pm	Sponsors Presentations
2.45pm – 3.00pm	Official close by Sue Aveyard

AAGSA National Conference Speakers



Michael Bernard

Michael E. Bernard, Ph.D. is an international consultant to universities, organisations, educational authorities and governments. He is a Professor at the University of Melbourne, Melbourne Graduate School of Education and Emeritus Professor, California State University, Long Beach. He is the Founder of You Can Do It! Education (www.youcandoiteducation.com.au) a program for promoting student social-emotional well-being and achievement that is being used in over 6,000 schools in Australia, New Zealand, Vietnam, Singapore, England, Romania and North America.

He is the author of over 50 books, 20 book chapters, and 30 journal articles in areas associated with peak performance, resilience, parenting, mental health and school improvement.

With his wife, Patricia Bernard, he has created an on-line positive parenting program consisting of eLearning programs, articles and audio-video motivational programs for young people.

Professor Bernard has worked as a consultant school psychologist helping families and schools address the educational and mental health needs of school-age children.

Professor Bernard was a co-founder of the Australian Institute for Rational Emotive Behaviour Therapy and is the author of many books on REBT.

Over the past decade, he has focused on the design and conduct of high performance mindset and resilience professional development programs.



Meg Salter

Meg Salter is one of Australia's most energetic and influential business speakers and trainers. As the owner of inaugural Training & Consulting and with over 25 years' experience in sales and service industries in Australia and the UK, Meg is dedicated to bridging the gap between what businesses are doing and what clients expect. With her no excuses approach to behavioural change and a common sense attitude towards skill development, Meg's entertaining presentations and workshop will encourage even the most jaded to become outstanding salespeople and leaders.

Earning an exciting reputation as a facilitator and speaker, Meg has motivated countless participants for a diverse range of companies including Flight Centre Limited, The Chrisco Group, Miele Australia, Telechoice, Travelscene American Express, NIB, the NSW Rural

Fire Brigade, Defense Housing Australia and the Institute of Chartered Accountants, and has been honoured to have been listed in speaker lineups with international superstars including Stephen Lundin, Li Cunxin, Stedman Graham, Lisa McInness-Smith and Wally Lewis.

As an authority in sales and leadership, Meg is committed to empowering individuals to change their behaviours and mindset in order to achieve success. Her dynamic presence and infectious humour are hallmarks of her spirited style, which makes her highly sought after. Passionate and inspirational, Meg is a charismatic catalyst for change.



Michelle Cowan

Michelle Cowan is currently the inaugural Senior Coach of Fremantle Football Club Women's Team and former Player Development Coach at Melbourne Football Club and Assistant Coach with South Fremantle Football Club. In 2013 Michelle was appointed as the 1st Senior Coach for the Melbourne Football Club Women's side.

Michelle was also awarded the Football Woman of the Year for 2013. Michelle has also recently been appointed the 2014 AFL DSR Coach of the Year.

A homegrown success story and compelling speaker, Michelle Cowan, has always defied convention/from being the only girl in the locker room, to the only Gen-Y in the boardroom, Michelle is a daring story of success against the odds. Taking the attitude which made her the pioneer of women of professional football coaching into the workplace, Michelle managed a team of 150 government staff as a 23 year old, before launching her own national training company, working with some of the biggest names in Australian sport.

Michelle's amazing stories are a tribute to what all of us can achieve with enough guts, grit and groove!



Mark Donohue

Mark is a Deakin University lecturer in the Graduate Certificate Course in Education Business Leadership. Mark brings an extensive and broad experience across a range of school settings. He also has vast knowledge of operational functions inclusive of the day to day operations, strategic thinking and the ability to facilitate, lead and manage programs for schools and their communities. In addition, Mark brings previous corporate knowledge after working in the private sector at Woods Educational Furniture.

Prior to this appointment, he was the Director of Daily Organisation at Kardinia International College. Mark also brings knowledge and experience from his 34 year career with the Department of Education in Victoria included being a School Principal for 25 years.

He has been proactive in training and supporting Principals and Business Managers in resource management and technical leadership development modules.

Professionally, Mark has been a participant in the Mt Eliza Business School – Advanced Management Program. Mark has also presented at the ASBO conferences in the USA over the past 3 years on school business leadership.

Conference information

When making your accommodation bookings please quote the booking-number.



Accommodation

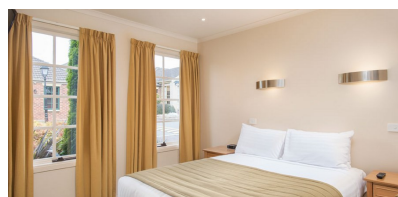
For Resort: BB# 917274

- deluxe rooms (queen bed + single bed configuration) | \$155 per night
- courtyard executive rooms (king bed OR 2 single beds) | 165 per night
- golf course executive rooms (king bed) | \$165 per night



For Villas: BB#982023

- 1-bed villas (queen bed) | \$119 per night
- 2-bed villas (queen bed + 2 singles) | \$154 per night
- 2-bed villas (king bed + double bed) | \$154 per night
- 3-bed villas (2 x queen beds + 2 singles) \$175 per night



Country Club Tasmania & Villas

Located minutes from Launceston's airport and city centre, our hotel in Launceston (Tasmania) offers the perfect base to explore the beauty of renowned Tasmanian wine region, the Tamar Valley. **Ph: 1800 635 344**

2 Day Conference Costs — \$395.00

Registration link

<https://www.trybooking.com/book/event?embed&eid=354738>

